

PORTFOLIO:



ARCHITECTURE & URBAN DESIGN

BY: JONATHAN ERIKSSON



thanneriksson.se



Jonathan (Thanne) Eriksson



@thanneriksson



By: Jonathan Eriksson

Education:

M.Sc. / Landscape Architecture - Master's Programme (120hp)  
Swedish University of Agricultural Sciences (SLU)

2018-2022  
Alnarp

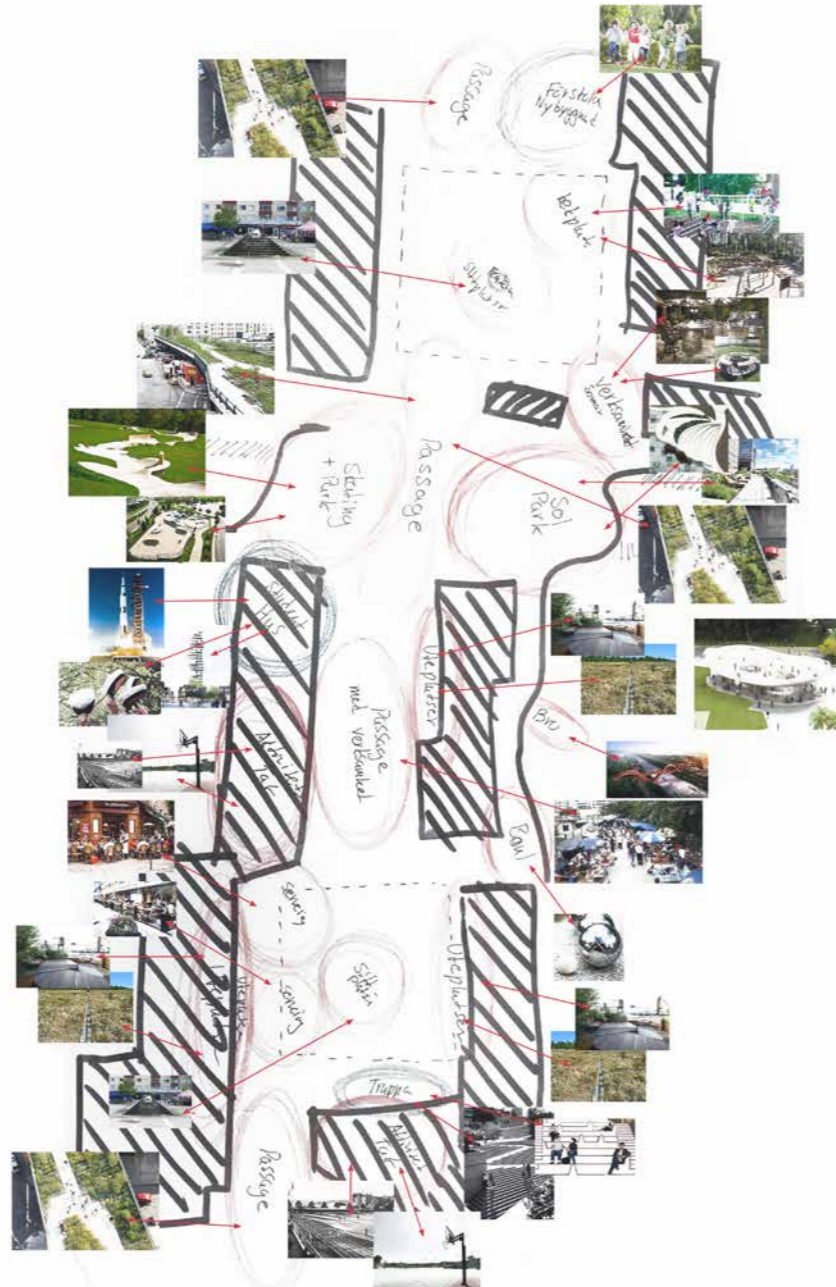
M.Sc. / Master's programme in Urbanism Studies (60hp)  
Royal Institute of Technology (KTH)

2019-2020  
Stockholm

B.Sc. / Architecture, Visualization & Communication (180hp)  
Malmö University (MAU)

2015-2018  
Malmö

contact: jonathan@thanneriksson.se / phone: +46 (0)72-3170095 / web: thanneriksson.se



1. **CX4 - ROSENGÅRD**  
Urban development, public space



2. **VISUALIZATIONS**  
3D-modeling, Renderings, Visualizations



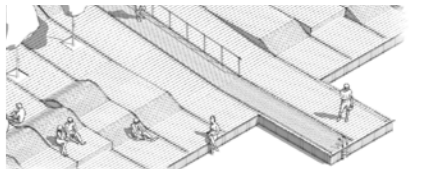
3. **VERTICAL PUBLIC SPACE**  
M.Sc. thesis, multi-story parking structures



4. **RUMET UNDER BRON**  
B.Sc. thesis, leftover spaces



5. **THE LEANING JETTY**  
Waterfront activation, public space







**Cx4**  
 CULTURE CASBAH CITY CORE  
 By: Jonathas Eriksson / Course: Design Project - Site, Concept and Theory

context mapping,  
 Rosengård

**new train station**  
 - accessibility  
 - possibility  
 - de-segregation  
 - interplay  
 - destination  
 - opportunities in labor

**new city core**  
 - landmark  
 - urban development  
 - possibility  
 - attachment  
 - sense of community  
 - density  
 - infill

**high traffic**  
 - entrance  
 - barrier  
 - accessibility  
 - opportunities in labor  
 - future development  
 - public transit

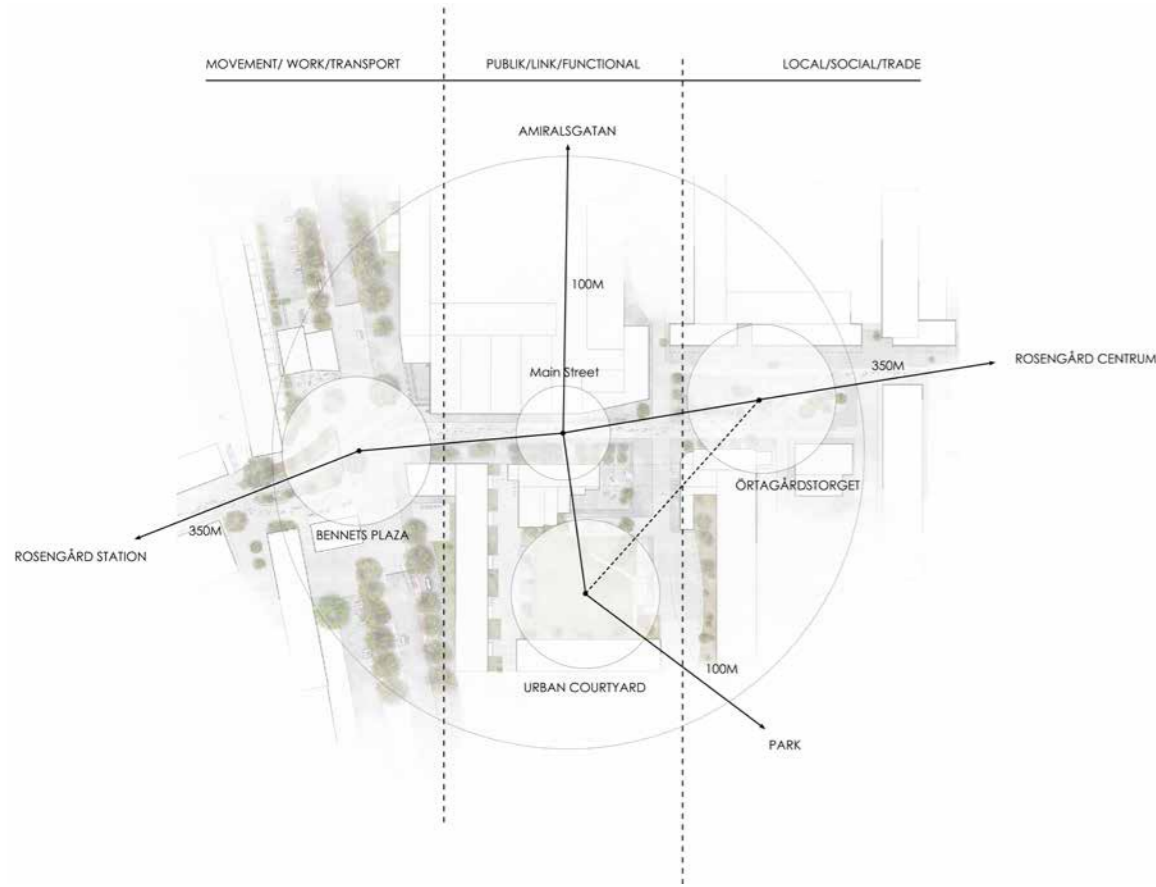
**comercial**  
 - economy  
 - meeting point  
 - center  
 - opportunities in labor

**sport activites**  
 - well-being  
 - activity  
 - voluntary  
 - event  
 - meeting point



1.01





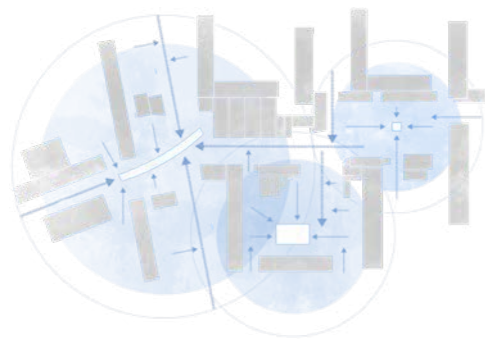
### Culture Casbah City Core

The Culture Casbah City Core (Cx4) project propose to develop the city core of the original Culture Casbah plan programme. The Cx4 project defines existing qualities within the site and connecting them with key spaces in the new plan programme. The vision is an attractive city core with new possibilities for local developments in business, labor, public space, housing and new services for the inhabitants.

The main development in the propose is the transformation of an existing courtyard to a qualitative public place for all Rosengårds inhabitants, "Urban Courtyard". The Urban Courtyard project work with an interplay between existing and new planed buildings to define an attractive public space with intersections in indoor - outdoor spaces. There the private contribute to the public and inverted, there greenspace with small hardscape interventions can become a simple but attractive place.



public - private



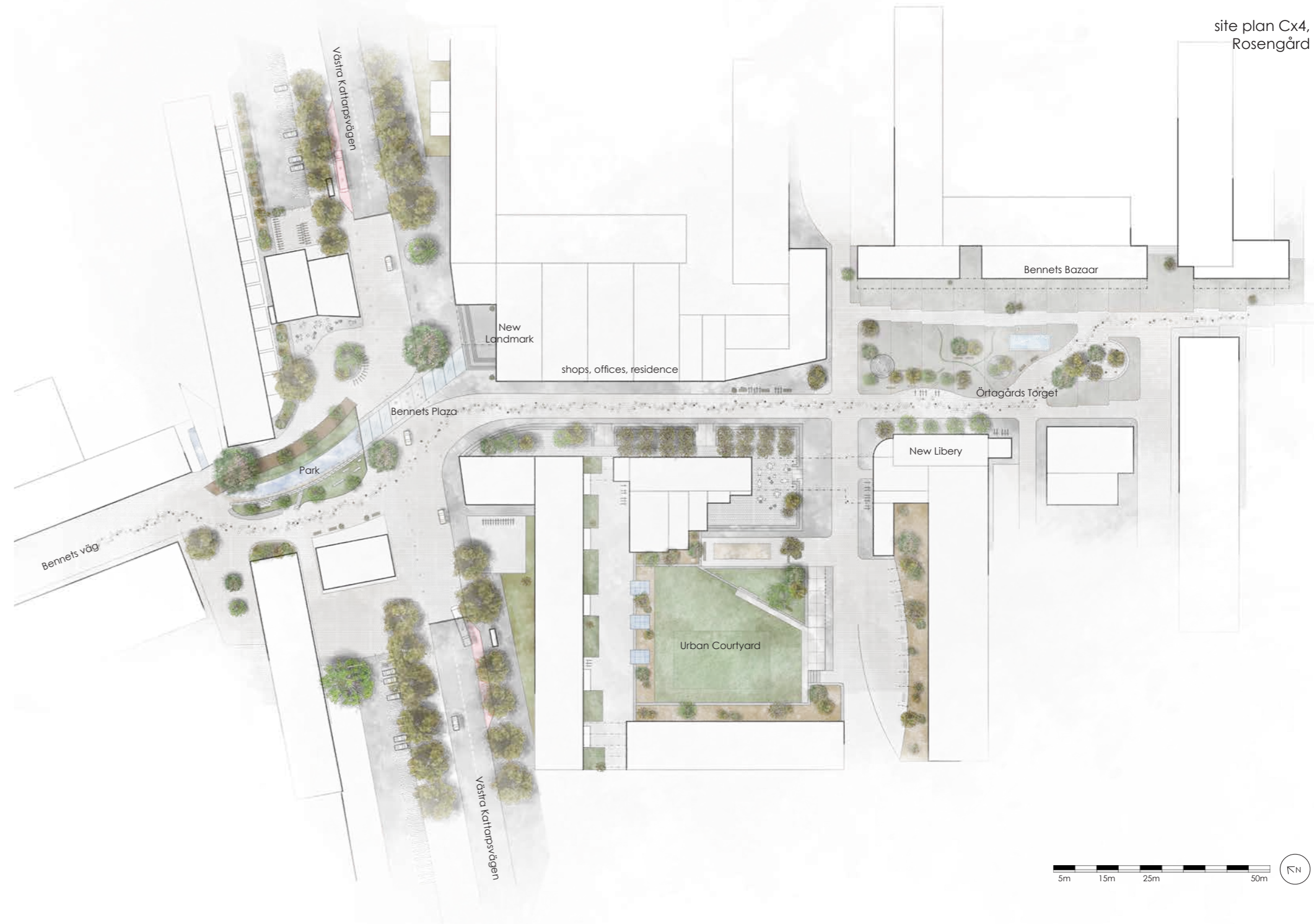
stormwater management



spatial locations



accessibility





## Visualizations

### Visualizations: Sweco Urban Insight

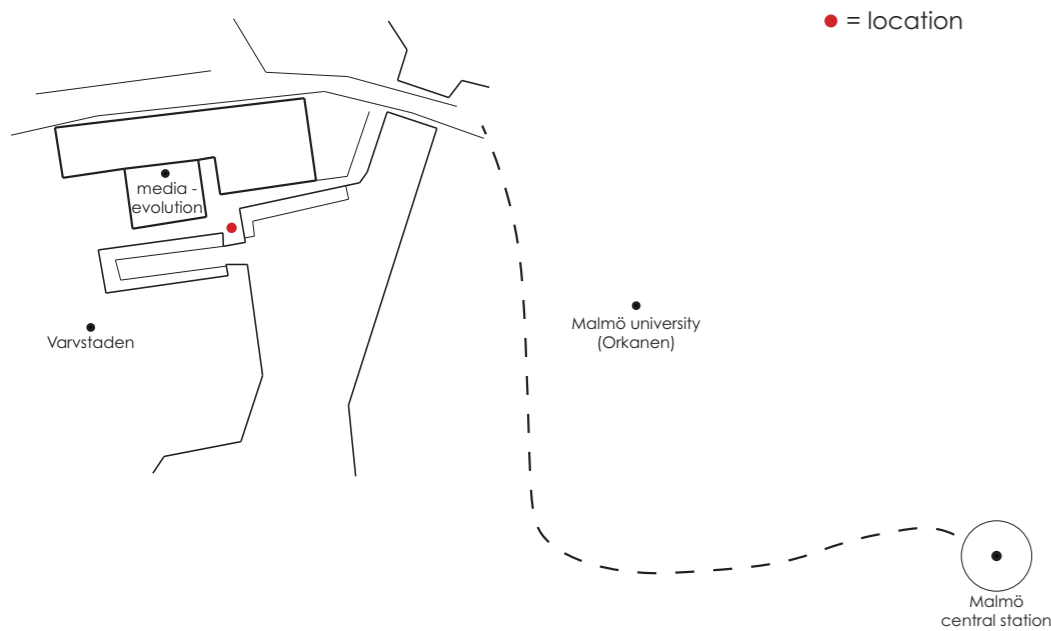
During my time as a freelancer, I have produced visual material for Sweco's cross initiative Urban Insight, which is widely used in their insight reports and various communication channels (both nationally and internationally). So far, I have produced visualizations on the themes: Healthy water cities – From sewer to health booster, Healthy cities for the next generation, Building back better and Towards circularity.

In process, these projects are relatively rapid, and leaves a lot of independence and responsibility to myself in its production.



2.01





"Closing time", showing the reflective façade interacting with the spotlights and its dynamic sounding.

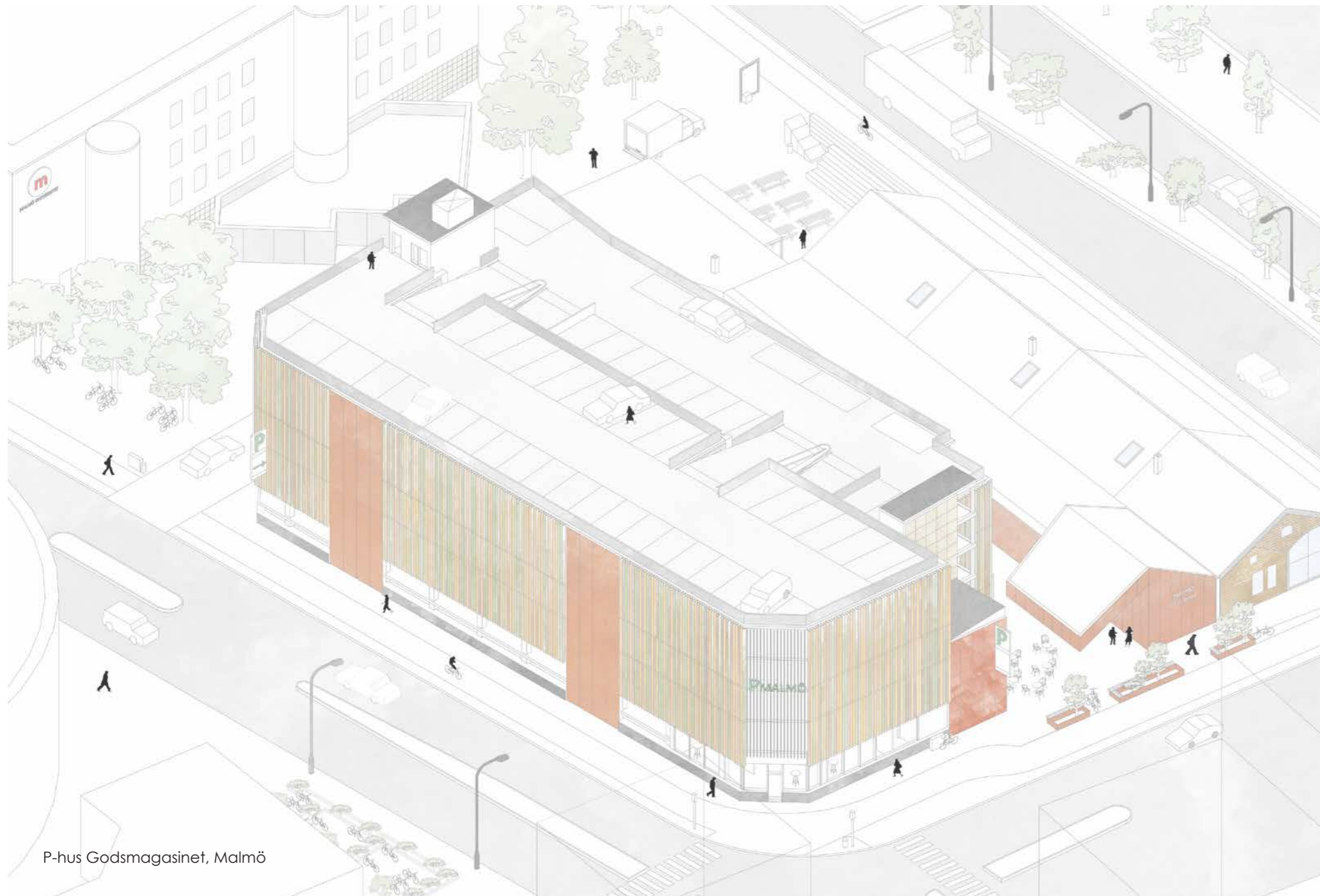
### Earth light:

The project "Earth light" is the result of an 3D-visualization course that gave advance knowledge and skills in digital image production within the field of architecture and urban planning. The task was to 3D modeling "Kiosk m.poli" by Brute Deluxe, and put it within a new context.

The concept became "Earth light", a temporary café kiosk with an interior in colorful mosaic, and with a reflective façade, which in combination with spotlights aim to create an esthetic expression within the site. With the objective to subsidize the street life and the adjacent business through the day, and at night become a guideline in the dark that contribute with esthetic, safety and interaction.

2.02





P-hus Godsmagasinet, Malmö

## VERTICAL PUBLIC SPACE

- the multi-story parking structures potential in relation to public space

The purpose of the project is to investigate the multi-story parking structures potential in relation to retrofit into public spaces. The project built on an alternative future scenario, there the amount of automobiles decreasing in our inner-city areas out from a mobility shift, linked to new technology and change of habits. This scenario will generate a spatial consequence on a city scale there several multi-story parking structures will become available for retrofitting into new types of uses and functions. This project investigates the potential and challenges of the retrofitting of multi-story parking structures out from contemporary practice, previous research, innovative projects and an actual case study of P-house Godsmagasinet in Malmö, Sweden. The work results in an exploratory design process in how P-house Godsmagasinet can be retrofitted into a public space out from a strategic design approach. There the design methodology is divided into different phases, to collect and use information simultaneously within the ongoing process.



Malmö

Fulltext available at: <http://kth.diva-portal.org/smash/record.jsf?pid=diva2:1474181>



3.01

## 0. Today:

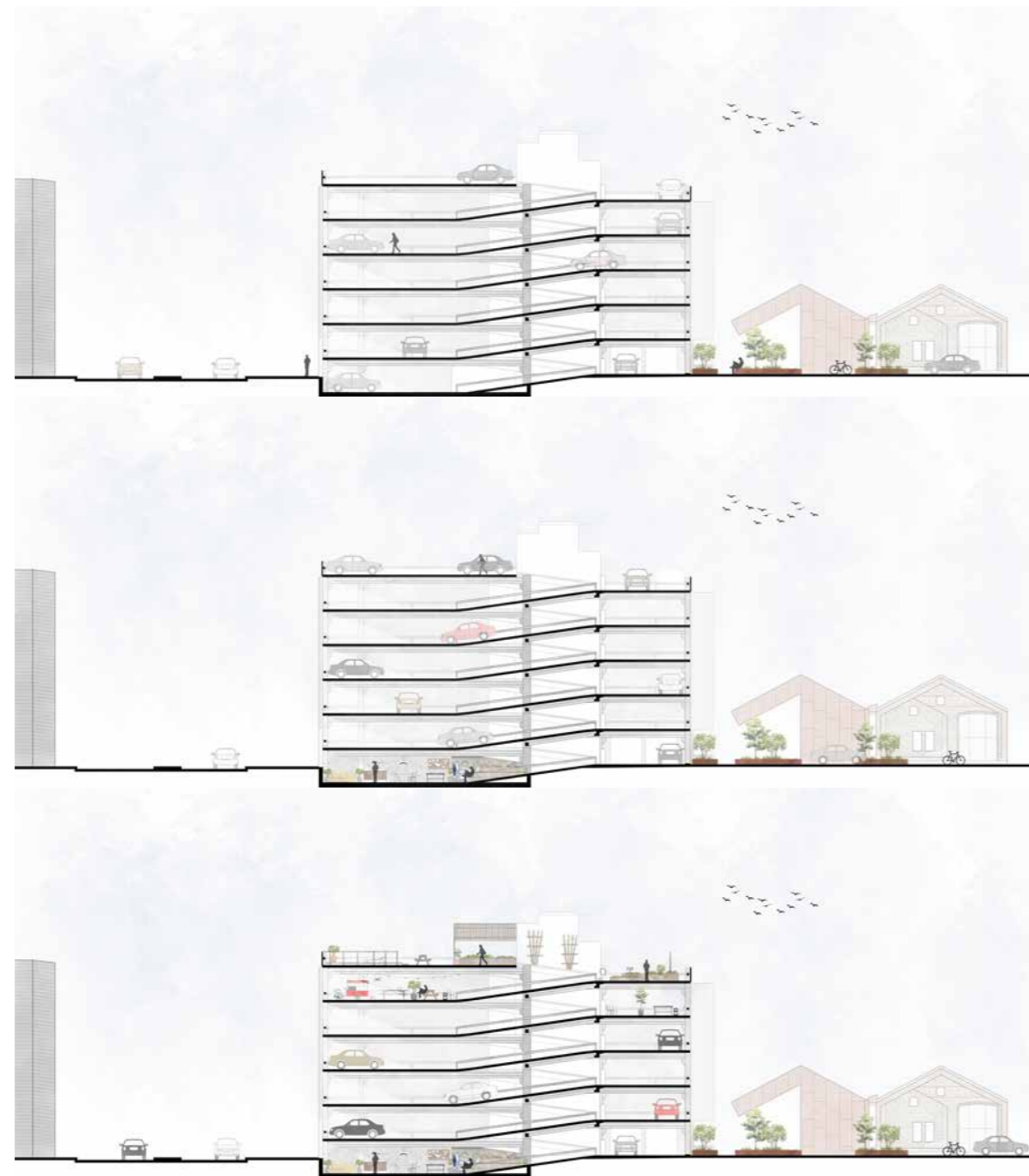
- Monofunctional
- Nois
- Car dominant
- Polluted

## 1. Space to place:

- Active
- Place
- Meeting point
- Wifi

## 2. Steping Up:

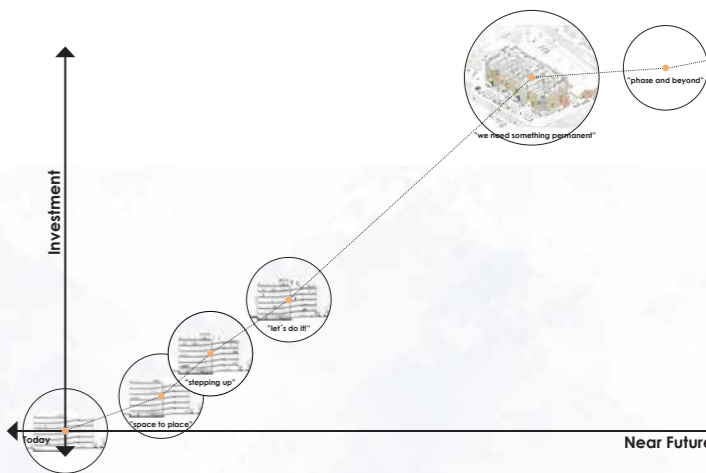
- Co-working space
- Music
- Recreation
- Food
- Colective events



## Five Phases:

The methodology in activating P-house Godsmagasinet is a strategic design process divided into five phases. There the three first phases are physical trails based on contemporary participation processes that direct the projects future interventions. By this temporary strategy the first three phases require minimal investment and allow analytical results simultaneously as the project is active. This both minimize investment risks and allow the projects users to be a part of the development towards a more permanent retrofitting of the multi-storey parking structure.

Figure 34. Diagram in relation to design methodology, communicating investment in relation to time to understand investment risks (Illustration by the author, 2020).

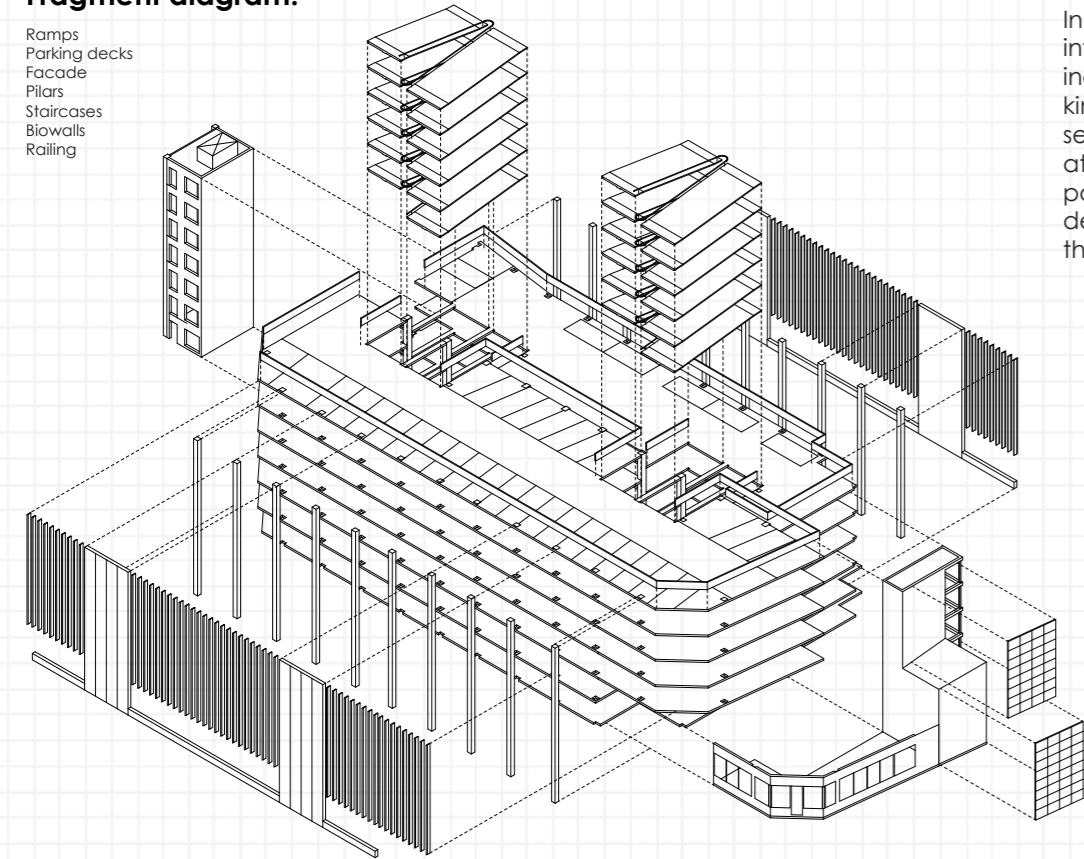


Phase 3: "let's do it!"



### Fragment diagram:

Ramps  
Parking decks  
Facade  
Pilars  
Staircases  
Biowalls  
Railing



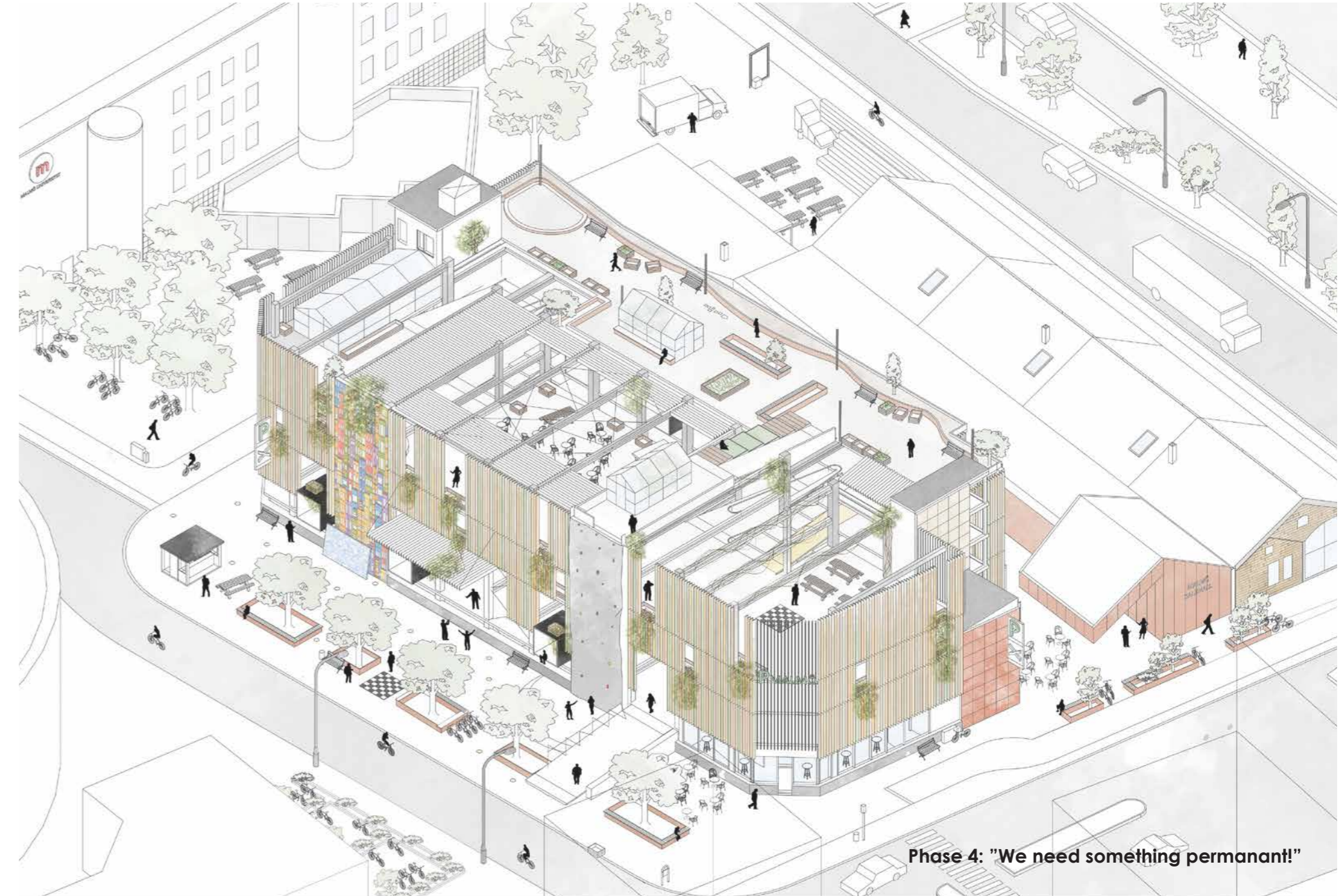
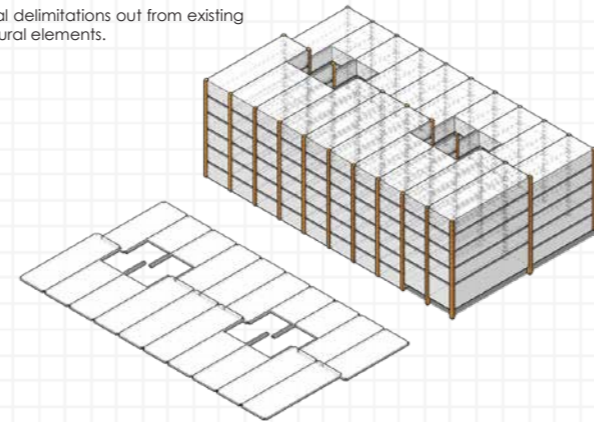
### Design process:

In the process towards a more permanent design of P-house Godsmagasinet, I draw a number of diagrams to understand the structure's different fragments, spatial qualities and delimitations. By this method I was able to define the structures fragments in a type of hierarchy, from permanent to movable. This become an interesting concept in relation to reuse and to avoid larger structural changes, to minimize constructions cost and construction time.

In this specific case the facade become an interesting element to refurbish, in relation to increase daylight qualities. The upper parking decks is removed in relation to create a semi-outdoor space at the top floor with greater spatial qualities. This larger procedure is possible by the fact that the two top parking decks is a later extension to the structure, and therefore not a part of the main constructure.

### Volume diagram:

Spatial delimitations out from existing structural elements.







# The Space Under the Bridge

## - Leftover room's potential

Project: Bachelor's thesis (20hp)

Partner: Terese Svenberg

University: Malmö university (MAU)

Period: 12 week (2018)

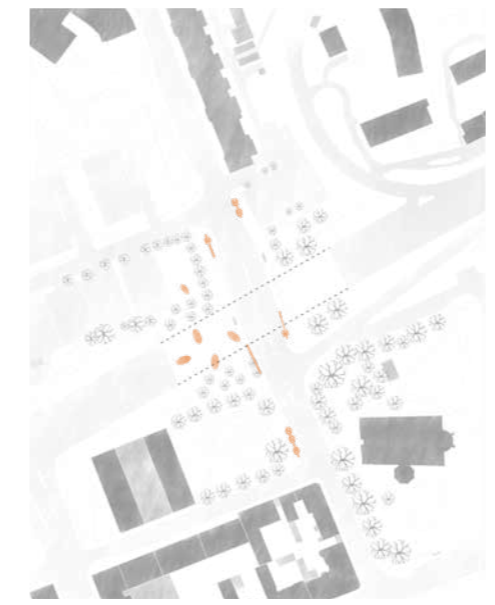
Available at: <http://muep.mau.se/handle/2043/25471>

The purpose of the work is to highlight the potential of several urban spaces, the left-over spaces that lacking a clear use or function. Where the local interests, its users and the context becomes the starting point for understanding what needs the space should be used for.

The work is based on a case study of the space under the bridge, Mälärbron in Södertälje and its context, where three proposals for development are studied and analyzed using a concept box. We especially support Quentin Steven's book *The Ludic City - Exploring the Potentials of Public Spaces* (2007), where his playful view of the city becomes a red thread to apply to, among other things, Kim Dovey's general theories of urban design in his book *Urban Design Thinking* (2016). The work results in a process that becomes an exploratory process of how the space under Mälärbron gets a more meaningful and versatile role that strengthens the urban context in the area.



### Densite:



### Volume:

- analysis of form and placement.
- interaction between existing and additions.
- idea of the impact of the context.

### Mix:

- Existing Rooms:**  
 Norra gräsplätten  
 Turingeparken  
 Norra parkeringen  
 Rummet under bron  
 Parkeringen under bron  
 Kyrkoparken
- Urban Furnitures:**  
 Bänkar-parken  
 Bänkar-stråk  
 Ovala formade objekt (sittmöbel/konst)  
 Konstbelysning  
 Teknisk element kopplade till Tom Tits verksamhet
- Buildings:**  
 Vädskyddat rum under bron
- Traffic:**  
 Bussnärlämplar  
 Bilt trafik  
 Kollektivtrafik  
 Parkeringsplats under bron  
 Parkeringsplats nordöst om bron  
 Parkeringsplats nordväst om bron  
 Laddstolpe för elcyklar
- Vegetation:**  
 Nya träd  
 Befintliga träd  
 Vägg med graffiti  
 Damm i park  
 Ny Häck mot Storgatan  
 Nya rabatter
- Ornamentation:**  
 Konstvägg  
 Möbleringszon i tegel  
 Spelgata  
 Konstelement längs Storgatan

### Functions:

- list of existing and new features.
- mix of functions and services
- attraction in relation to usability.

### Access:



### Movement:

- new movement patterns based on new additions.
- line of sight based on existing movement patterns.
- idea of how the movement creates spatiality.

### D.M.A.:



### Social interactions:

- hypothetically, map interaction points.
- new added features that contribute to activation.
- movement and functions.



### Exploratory process:

In the final chapter of our project we present our own exploratory process, a physical trial, there we highlight a number of possibilities in relation to the activation of the bridge room and its context. These six interventions are designed out from our theoretical, analytical and case findings in relation to the local needs and desires.



1:

### Chess:

- popular indoor activity to outdoors space.
- activity for both elderly and young people, generates new meetings.
- active play performer or active observer, public play.



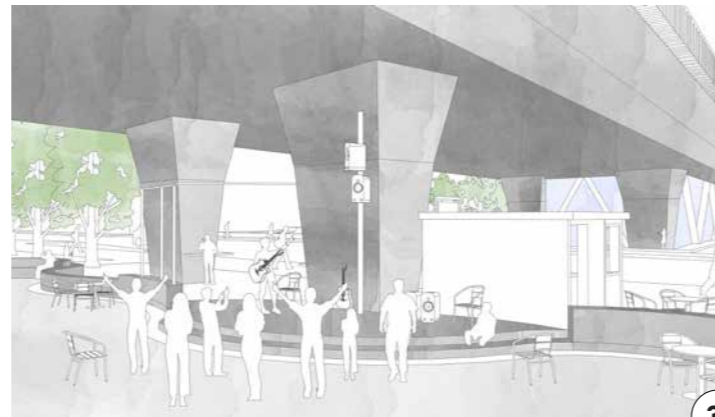
2:

### Ice-skating:

- seasonal activity (winter-time).
- generates public life and calls for observation.
- playful and enlightened.
- movement and outdoor activity.



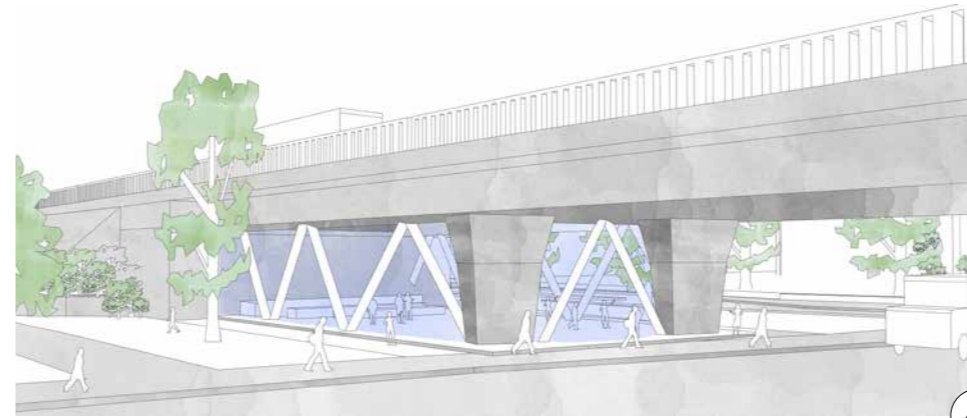
### Flexiytan:



3:

### The Scene:

- allows local artists to take place in the public realm.
- attracts and entertains people.
- playful and enlightened.
- generates public life and calls for observation.



4:

### Transparent:

The propose "Transparent" is mainly based on interviews from the local inhabitants and there strives to visit outside under a longer period of time during the season. Transparent plays with the intersection between outside and inside, there the transparent glass-cube activates the exterior by observation, light and present. Its interior is a flexible space for temporal activities, for both local organisations and the private sector. The space intends to be an extension of the home as well, out from the knowledge of overcrowded apartment and young people that need an alternative space for educational or social purpose.



5:

### The Kiosk:

- service that invites people to be a part of the place.
- contributes with background activity and therefore safety.



6:

### The Business:

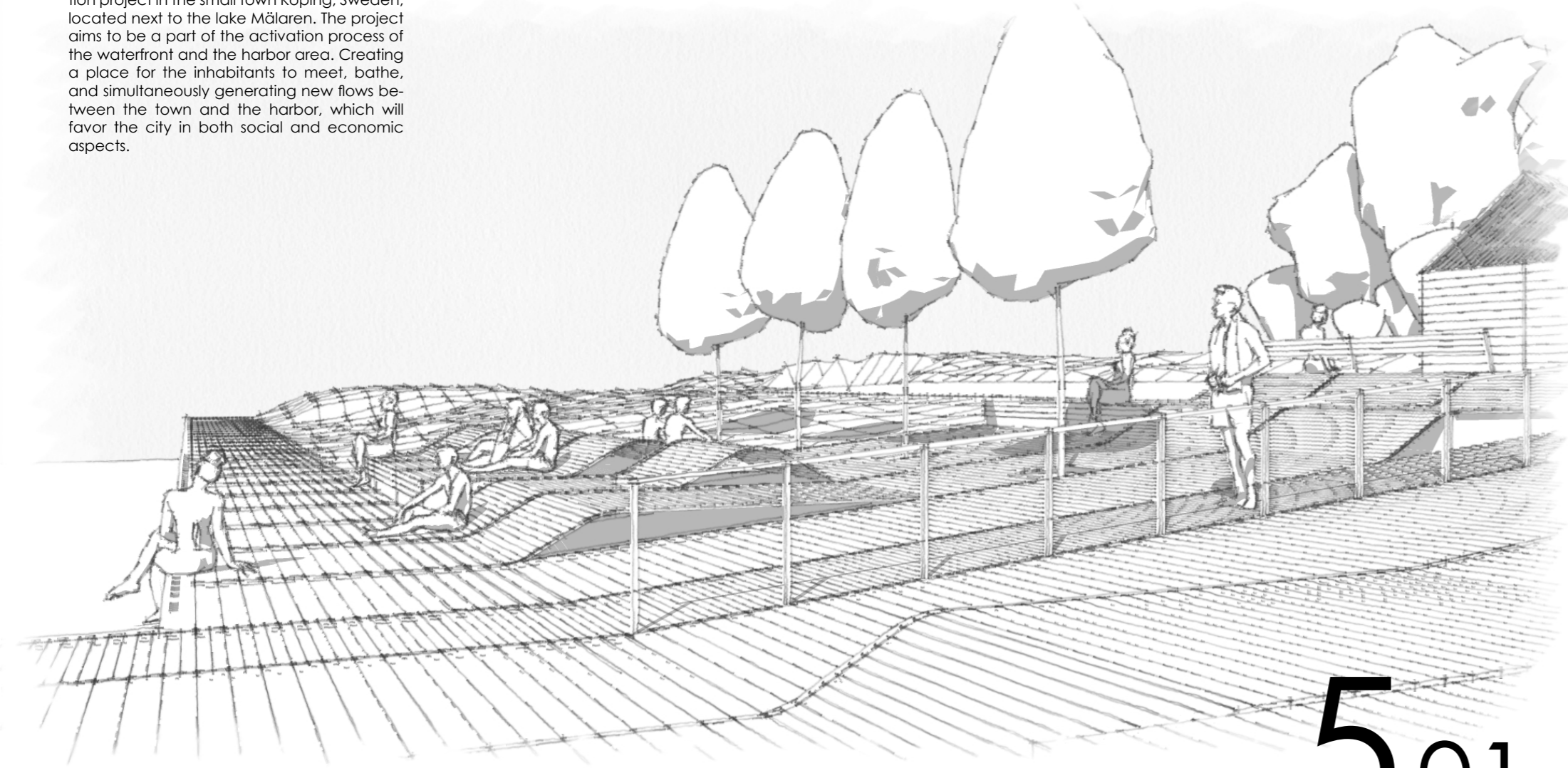
- administrative responsibility, lending chess pieces, ice skating and music etc.
- a business provides more opportunities, with services that enable longer visits (food, wc etc.).
- adds a humble mix of private / public, important to find the right owner of the business.



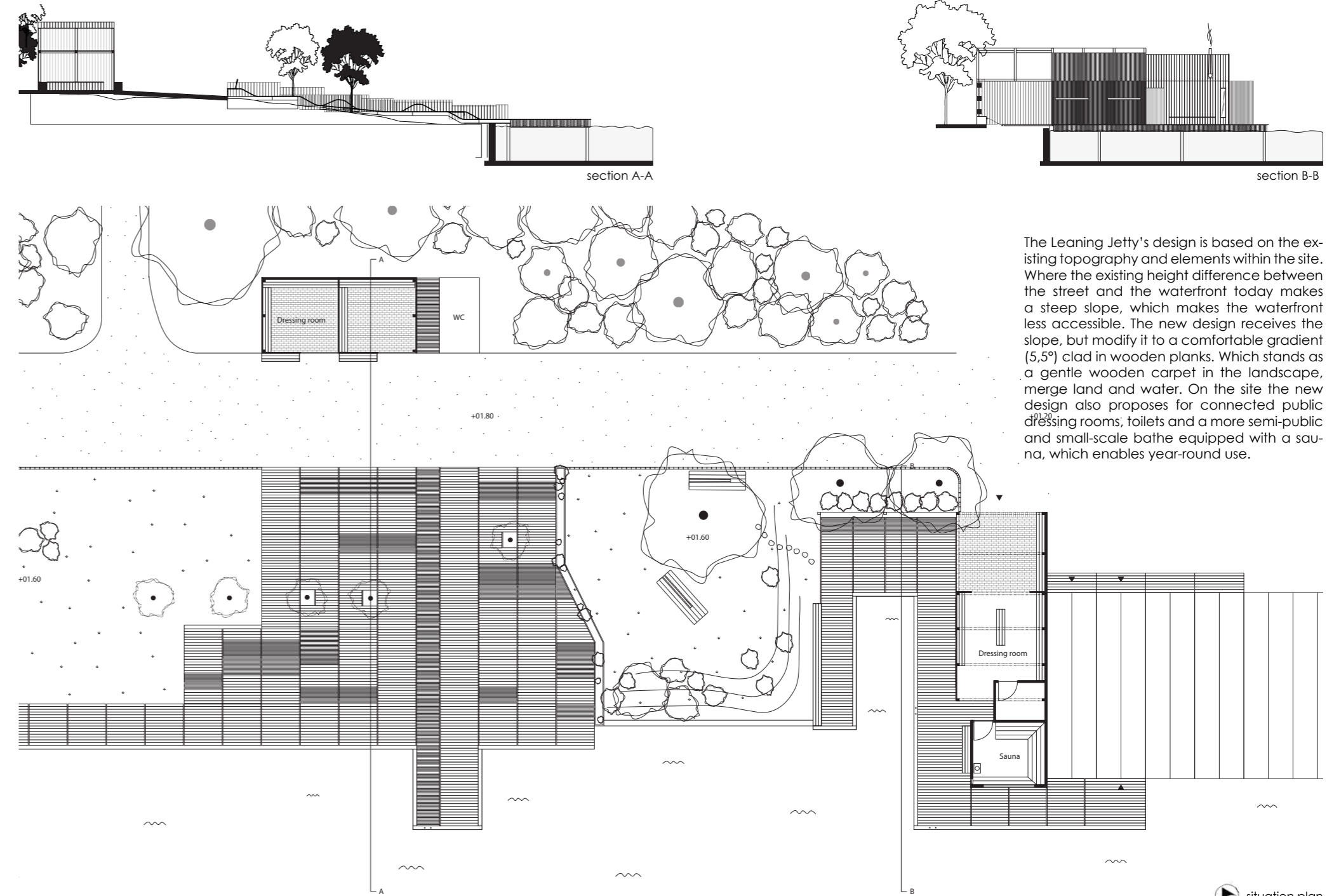
# The Leaning Jetty, Köping

Project: Waterfront activation and public space design in Köping  
Course: Nordic Studio - Designing Urban Public Places (7.5 hp)

The Leaning Jetty is part of an urban recreation project in the small town Köping, Sweden, located next to the lake Mälaren. The project aims to be a part of the activation process of the waterfront and the harbor area. Creating a place for the inhabitants to meet, bathe, and simultaneously generating new flows between the town and the harbor, which will favor the city in both social and economic aspects.

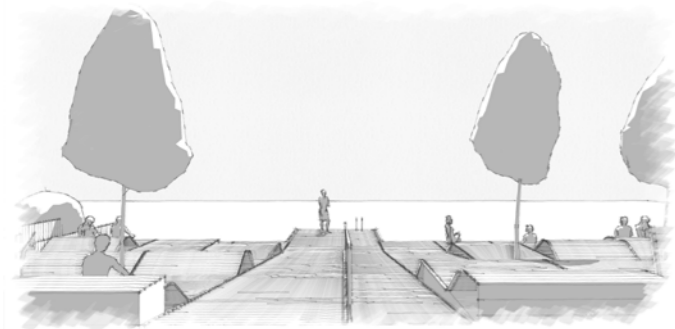


# 5.01

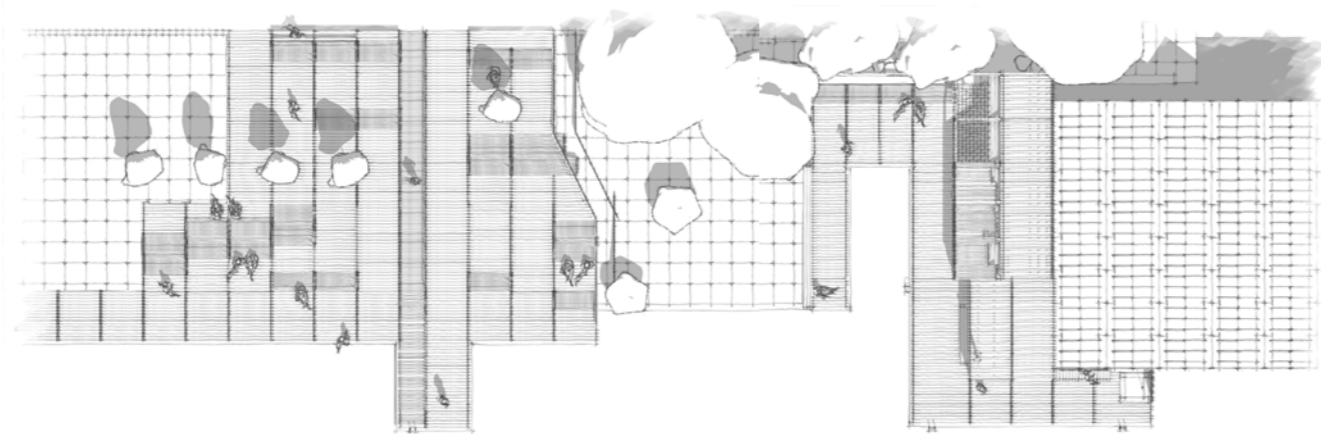


The Leaning Jetty's design is based on the existing topography and elements within the site. Where the existing height difference between the street and the waterfront today makes a steep slope, which makes the waterfront less accessible. The new design receives the slope, but modify it to a comfortable gradient (5,5°) clad in wooden planks. Which stands as a gentle wooden carpet in the landscape, merge land and water. On the site the new design also proposes for connected public dressing rooms, toilets and a more semi-public and small-scale bathe equipped with a sauna, which enables year-round use.

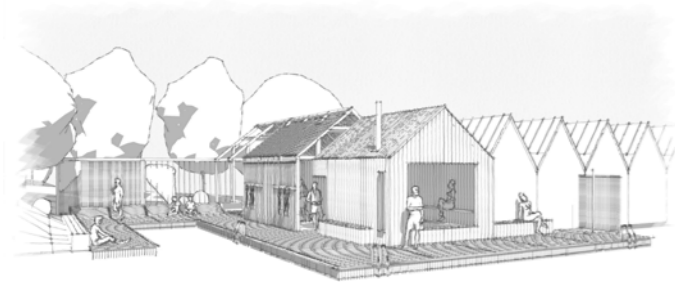




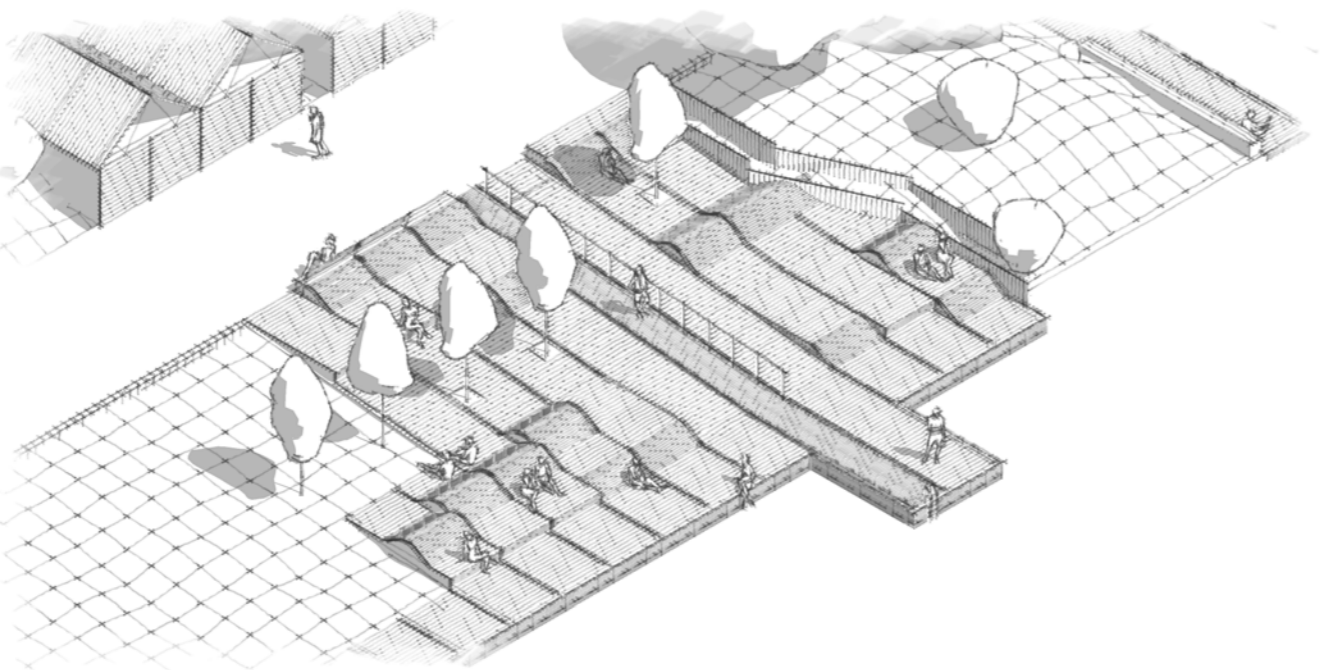
View from the top of the bridge into the water.



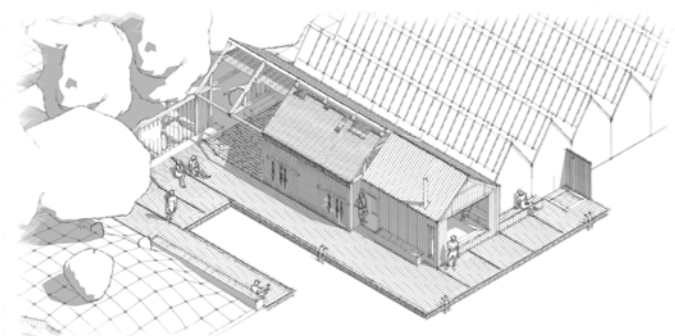
3D-siteplan over the site, highlighting the designs interplay with the landscape and dynamic aspects.



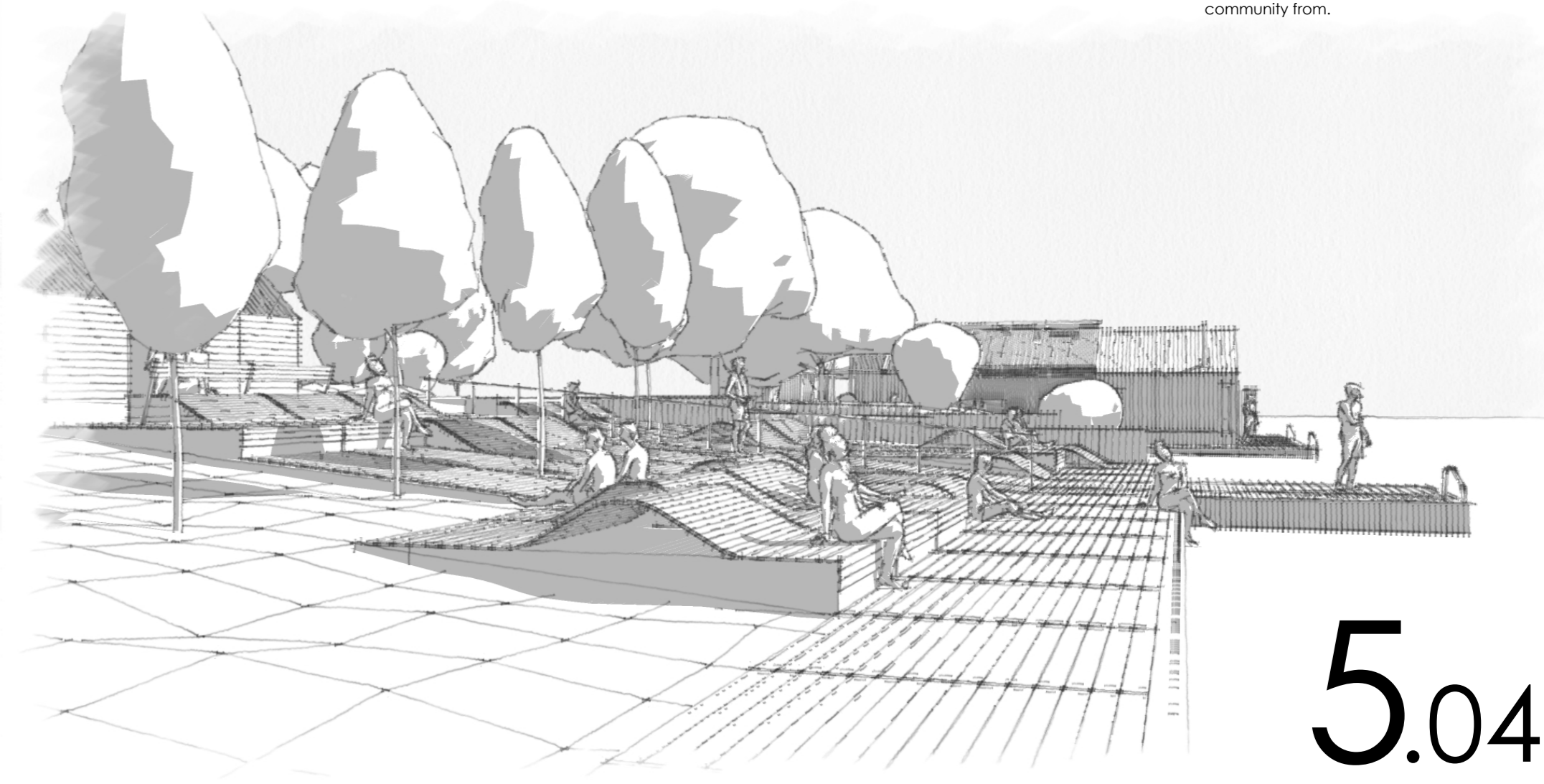
View from the water towards the sauna.



Isometric drawing over the Leaning Jetty.



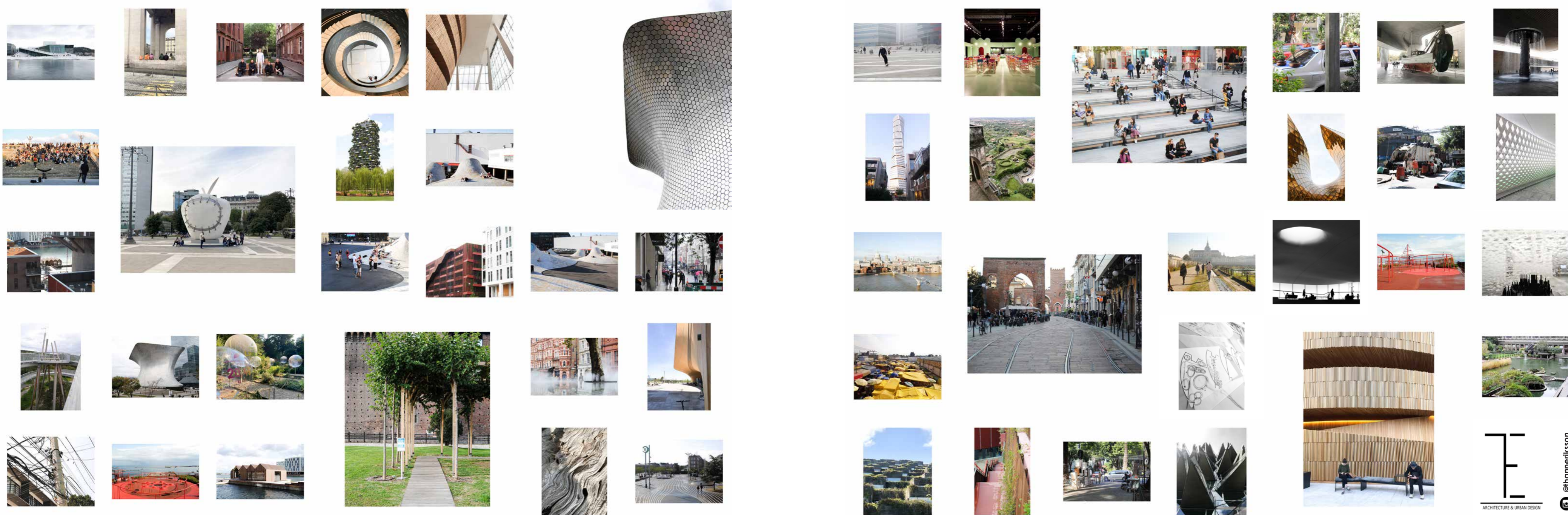
Isometric drawing over the small-scale bathe and the sauna.



The Leaning Jetty aims in its simplicity, in relation to material and dimensions to create various spaces within the jetty for sitting, sunbathing, interaction and play. In hope of establish a common ground for the inhabitants of Köping to enjoy together and grow as a community from.

5.04









## Publications:

**Privatization of Public Space - Apple Piazza Liberty**  
M.Sc Thesis, SLU, 2022.

**Vertical Public Space - Multi-story Parking Structures Potential in Public Space**  
M.Sc Thesis, KTH, 2020.

**The Space under the Bridge - Leftover room's potential**  
B.Sc Thesis, MAU, 2018.

 [thanneriksson.se](mailto:thanneriksson.se)

 Jonathan (Thanne) Eriksson

 @thanneriksson